



The world's LGBT marketing agency.

LGBT2020

Next Level Thinking.

Ian Johnson

Darren Cooper

Susann Jerry

Lotte Jeffs



London, UK. 21 January 2011.

Out Now.

The world's leading provider of insight through marketing solutions focused on delivering improved understanding and enhancement to LGBT people's lives - wherever they may live.

Welcome+introductions



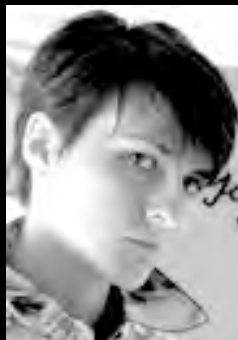
Darren**Cooper**



Thomas**Lynch**



Kim**Watson**



Lotte**Jeffs**



Dick**Stroud**



Ian**Johnson**



Susann**Jerry**



Paul**Bradley**



Welcome+introductions



Video link.



<http://www.youtube.com/watch?v=OsbilXu8sL4>



www.NextLevelThinking.com

www.LGBT2020.com

www.OutNowConsulting.com

Roadmap

- Welcome + introductions
- Study overview
- **Home Office**
- Diversity Sells
- Working voices
- Media matters
- Grey and gay
- The L in LGBT
- Case study 1
- TUI Freedom
- Case study 2
- Lloyds TSB
- Panel discussion
+ Questions
- Close

Homeoffice



Paul **Bradley**

Chair -
Spectrum

Home Office

Homeoffice - Spectrum



Homeoffice - Here come the girls



Homeoffice - The girls are back in town



Roadmap

- Welcome + introductions
- Study overview
- Home Office
- Diversity Sells
- Working voices
- Media matters
- Grey and gay
- The L in LGBT
- Case study 1
- TUI Freedom
- Case study 2
- Lloyds TSB
- Panel discussion
+ Questions
- **Thanks!**

LGBT2020.

- OutNowGlobal.com
- NextLevelThinking.com
- LGBT2020.com
- info@OutNowConsulting.com



The world's LGBT marketing agency.

© 2010 Out Now

All concepts, data, materials, strategies & forms of expression remain at all times property of Out Now Consulting.